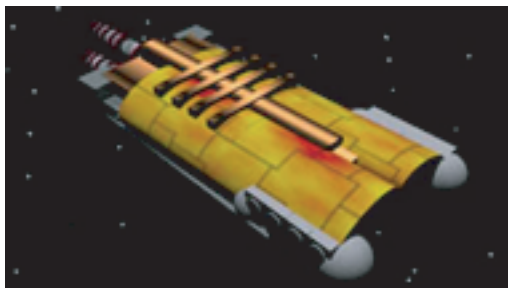




K'Thonn Pra'Kahri Light Carrier



SPECS

Class: Hvy Combat Vsl
 In Service: 2017
 Point Value: 350
 Ramming Factor: 170
 Jump Delay: N/A

MANEUVERING

Turn Cost: 1 x Speed
 Turn Delay: 2/3 Speed
 Accel/Decel Cost: 3 Thrust
 Pivot Cost: 3+3 Thrust
 Roll Cost: 1+1 Thrust

COMBAT STATS

Fwd/Aft Defense: 13
 Stb/Port Defense: 15
 Engine Efficiency: 5/1
 Extra Power: 0
 Initiative Bonus: +6

WEAPON DATA

Hellbore Cannon
 Class: Plasma
 Mode: Standard
 Damage: 3d10+4 (-1 per hex)
 Range Penalty: -1 per hex
 Fire Control: +2/+0/-5
 Intercept Rating: n/a
 Rate of Fire: 1 per 2 turns

Particle Burst

Class: Particle
 Mode: Standard
 Damage: 2d6+1
 Range Penalty: -2 per hex
 Fire Control: +2/+2/+4
 Intercept Rating: -1
 Rate of Fire: 1 per turn

Speed	1	2	3	4	5	6	7	8	9	10	11	12
Turn Cost	1	2	3	4	5	6	7	8	9	10	11	12
Turn Delay	1	2	2	3	4	4	5	6	6	7	8	8

FORWARD HITS

- 1-4: Retro Thrust
- 5-6: Hellbore Cannon
- 7: Particle Burst
- 8-10: Hangar
- 11-18: Forward Struct
- 19-20: PRIMARY Hit

AFT HITS

- 1-7: Main Thrust
- 8-9: Particle Burst
- 10-17: Aft Struct
- 18-20: PRIMARY Hit

PRIMARY HITS

- 1-10: Primary Struct
- 11-13: Port/Stb Thrust
- 14: Sensors
- 15-17: Engine
- 18-19: Reactor
- 20: C&C

SPECIAL NOTES

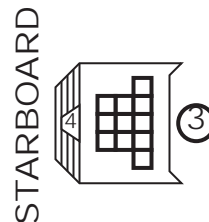
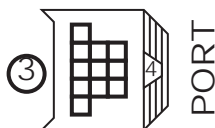
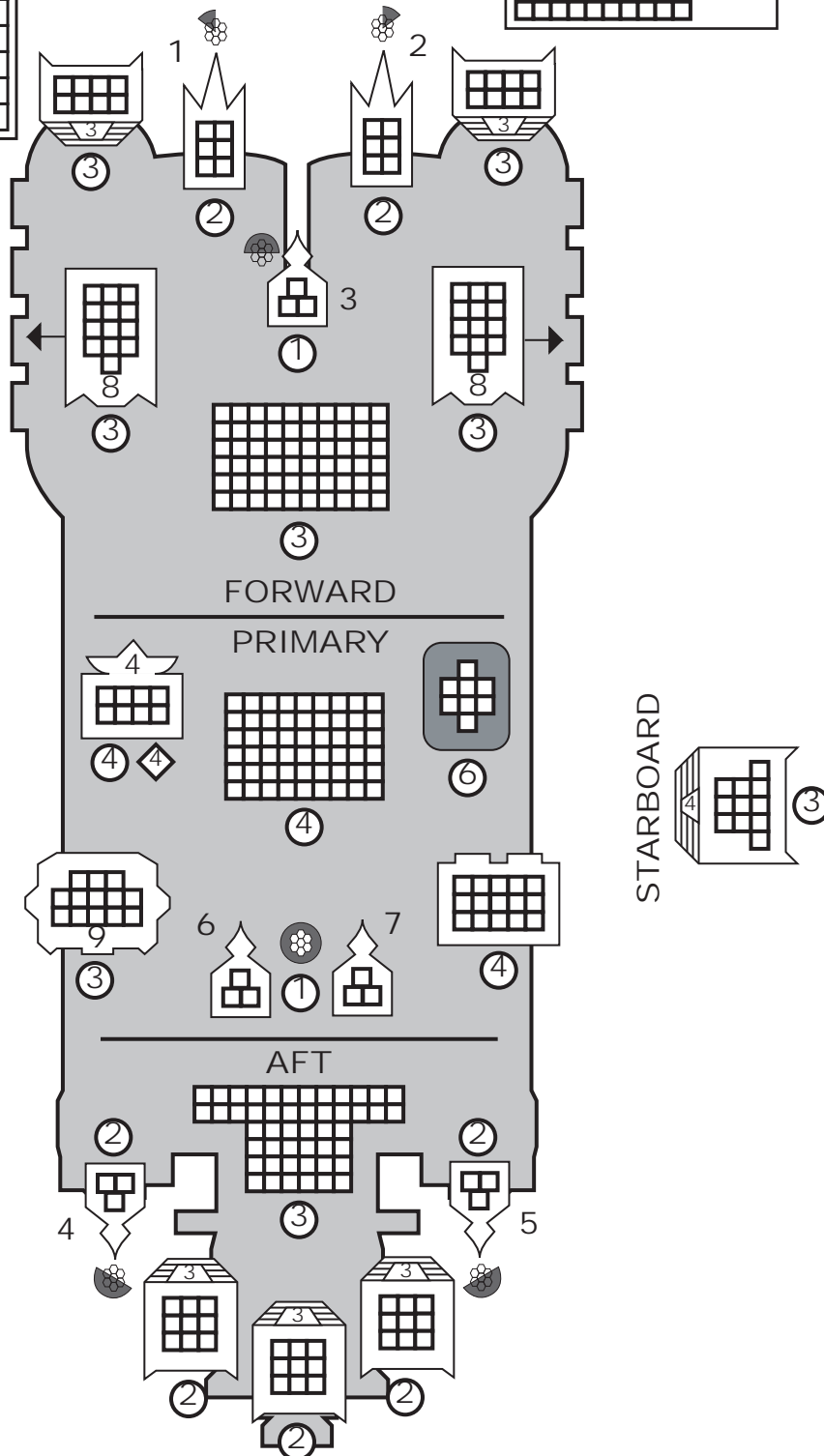
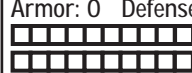
Antiquated Sensors

SENSOR DATA

Defensive EW	
Target #1	
Target #2	
Target #3	
Target #4	
Target #5	
Target #6	

HANGARS

12 Fighters each
 1 Shuttle each: Thrust: 5
 Armor: 0 Defense: 10/10



ICON RECOGNITION

- Thruster
- C & C
- Sensors
- Engine
- Reactor
- Hangar
- Hellbore Cannon
- Particle Burst